



Beautifully finished, our Inspire range of heaters are the highest quality on the market and are available in a number of finishes ranging from white panels to picture and glass panels. Manufactured to the highest standards in Germany, they are designed and built to last a lifetime and come complete with a 10 year warranty.

**INSPIRE PICTURE** Far Infrared heating panels combine efficiency and comfort with stylish, eye-catching printed designs. Mundane and space consuming radiators become a thing of the past with the wall mounted picture panels, just like traditional pictures.

These heating panels will not only heat your rooms but can also serve as aesthetic pieces of art for your home. Choose any design from our range of standard motifs, or provide your own picture or photo for printing. The INSPIRE PICTURE panel has a choice of 2 finishes: choose between a matt or gloss finish.

The Inspire panels are specifically designed to be maintenance free and to last for many years. For this reason, and to enable accurate temperature control and efficiency, the panels do not have any in-built controls and must be used in conjunction with the Herschel MD2 thermostat or equivalent.

TECHNICAL DETAILS

- SURFACE: ESG Safety Glass
- COLOUR: Printed standard or custom motifs
- REAR PANEL: Sheet steel, powder-coated, mounting points
- SURFACE TEMPERATURE: Approx. 185°F - 203°F
- VOLTAGE: 230V 50Hz
- PROTECTION CLASS: IP54 (indoor use only)
- INSTALLATION: Wall mounted
- CERTIFICATES:
- WARRANTY: 10 years  
(Refer to the warranty policy on Herschel-infrared.com for more detail including exclusions)

AVAILABLE MODELS

| Model           | Part No. | Dimensions     | Weight  | Rated Power | Heated Area            |
|-----------------|----------|----------------|---------|-------------|------------------------|
| INSPIRE PICTURE | BH-200   | 11.8 × 23.6 in | 9.0lbs  | 250W        | 32-52ft <sup>2</sup>   |
|                 | BH-300   | 11.8 × 35.4 in | 13.7lbs | 350W        | 43-75ft <sup>2</sup>   |
|                 | BH-400   | 23.6 × 23.6 in | 16.5lbs | 420W        | 52-85ft <sup>2</sup>   |
|                 | BH-500   | 23.6 × 31.5 in | 22.3lbs | 550W        | 75-130ft <sup>2</sup>  |
|                 | BH-750   | 27.5 × 35.4 in | 28.7lbs | 750W        | 118-194ft <sup>2</sup> |
|                 | BH-900   | 31.5 × 39.4 in | 35.9lbs | 900W        | 140-236ft <sup>2</sup> |
|                 | BH-1200  | 31.5 × 47.2 in | 44.1lbs | 1200W       | 183-312ft <sup>2</sup> |

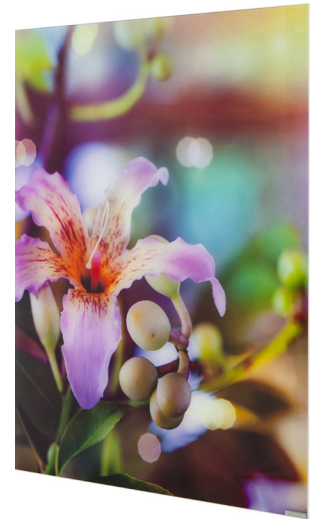
FRAMES - available options

| Model                 | Part No.          | Product picture |  |
|-----------------------|-------------------|-----------------|--|
| INSPIRE FRAME OPTIONS | Silver matt       | AP-RA 7004      |  |
|                       | Silver shiny      | AP-RA 7003      |  |
|                       | Brushed mercury   | AP-RA 7327      |  |
|                       | Gold shiny        | AP-RA 7001      |  |
|                       | Black matt        | AP-RA 7021      |  |
|                       | Walnut structured | AP-RA 7318      |  |

Printed colours may vary from the original articles for illustrative reasons. Subject to technical changes and changes in the range and availability.

The heated areas are an indicative guide only. The actual heated area will depend on the heat loss of the room which is influenced by many factors including construction type, external walls, window area and insulation levels. Always use the Herschel online calculator or contact your dealer or installer for an accurate specification.

The Inspire panel comes with two mounting brackets. When installed, the front of the panel will extend a total of 2" from the wall. The panel will radiate heat into the room and will perform best when mounted in a position free of any direct obstructions such as a sofa. The panel will need to be wired into the mains and this should be carried out by a suitably qualified electrician. Refer to installation instructions for full details.



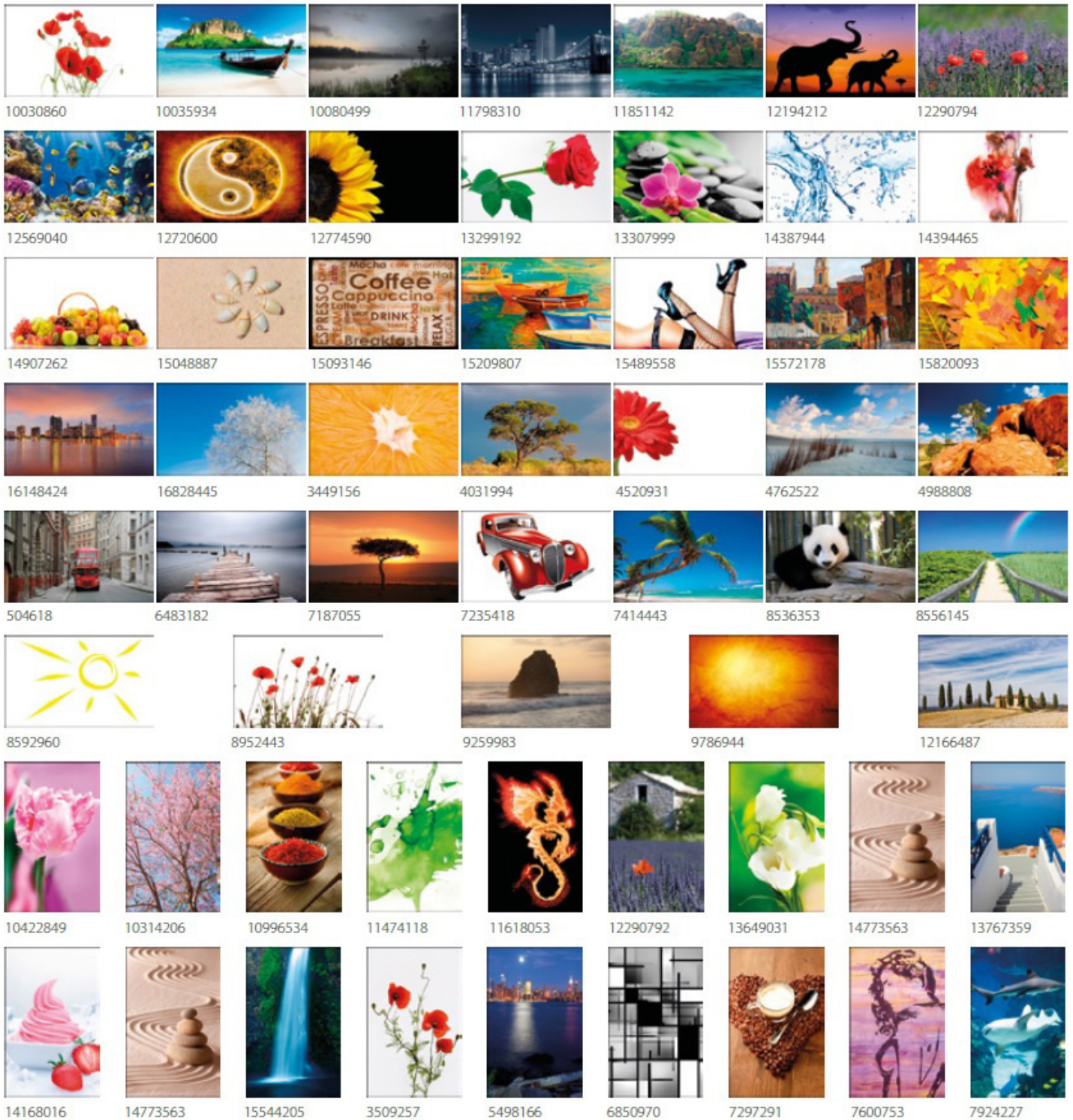
**6 REASONS WHY**

- ✓ 100% natural
- ✓ Heats objects, not the air
- ✓ Less damp and mould
- ✓ Reduced energy use
- ✓ Maintenance free
- ✓ CO2 free when used with renewable energy





STANDARD MOTIFS - Choose any design from our range of standard motifs.



Printed colours may vary from the original articles for illustrative reasons. Subject to technical changes and changes in the range and availability.